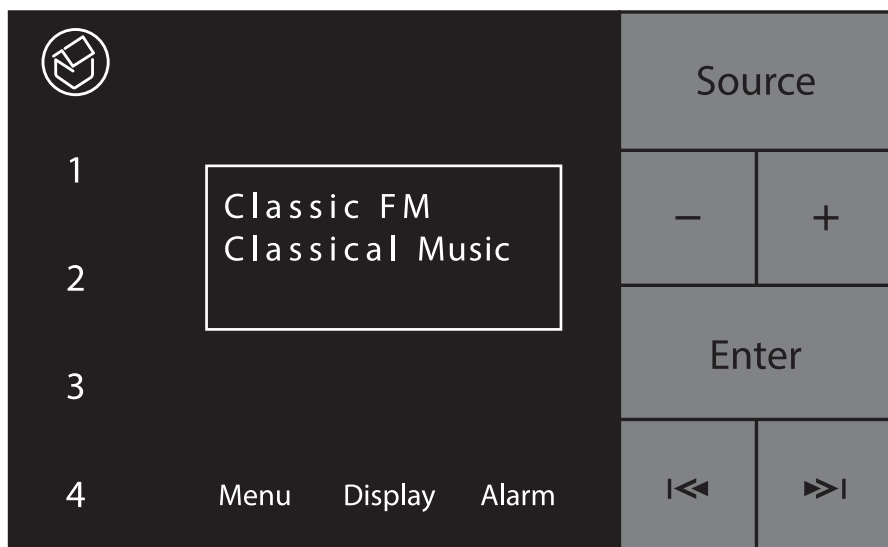


E100 User Guide

*Built-in DAB+, FM & **Bluetooth**® Hi-Fi sound system*



1.0 Important Safety Instructions



CAUTION: To reduce the risk of electric shock, do not remove the cover. No user-serviceable parts inside. Refer to qualified personnel.

WARNING: To reduce the risk of fire or electric shock, do not expose this appliance to rain or moisture.



The lightning flash with arrowhead within an equilateral triangle is intended to alert the user to the presence of an uninsulated "dangerous voltage" within the product's enclosure, that may be of sufficient magnitude to constitute a risk of electrical shock to persons.



The exclamation mark within an equilateral triangle is intended to alert the user to the presence of important operating maintenance (servicing) instructions in the guide accompanying this device.

Read Instructions: All the safety and operating instructions should be read before the unit is operated.

Retain Instructions: The safety and operating instructions should be retained for future reference.

Heed Warnings: All warnings on the unit and in the operating instructions should be followed.

Follow Instructions: All operating instructions should be followed.

Cleaning: Unplug the unit from the wall outlet before cleaning. The unit should be cleaned only with a lint free dry cloth.

Attachments: Only use attachments recommended by the manufacturer as non-recommended attachments may cause hazards.

Water and Moisture: Do not use the unit near water—for example, near a bath tub, wash bowl, kitchen sink, or laundry tub; in a wet basement; or near a swimming pool.

Accessories: Do not place the unit on an unstable surface, stand, tripod, bracket, or table. The unit may fall, causing serious injury to yourself or others, and serious damage to the unit.

Ventilation: Do not place in a location or position that will interfere with the unit's ventilation. Do not operate on a bed, sofa, rug, or other similar surface.

Power Sources: The unit should be operated only from the type of power source indicated on the marking label. If you are not sure of the type of power supplied to your home, consult your local power company.

Power-Cord Protection: Power-supply cords should be routed so that they are not likely to be walked on or pinched by items placed upon or against them, paying particular attention to cords where they enter a plug, or exit from the unit.

Lightning: For added protection for the unit during a lightning storm, or when it is left unattended and unused for long periods of time, unplug it from the wall outlet and disconnect from other devices. This will prevent damage to the unit due to lightning and power-line surges.

Overloading: Do not overload wall outlets, extension cords, or integral convenience receptacles as this can result in a risk of fire or electric shock.

Object and Liquid Entry: Never push objects of any kind into the unit through openings as they may touch dangerous voltage points or short-out parts that could result in a fire or electric shock. Never spill liquid of any kind on the unit.

Servicing: Do not attempt to service the unit yourself as opening or removing covers may expose you to dangerous voltage or other hazards. Refer all servicing to qualified service personnel.

Damage Requiring Service: Unplug the unit from the wall outlet and refer servicing to qualified personnel under the following conditions:

- When the power-supply cord or plug is damaged,
- If liquid has been spilled, or objects have fallen into the unit,
- If the unit has been exposed to rain or water,
- If the unit does not operate normally by following the operating instructions,
- If the unit has been dropped or damaged in any way,
- When the unit exhibits a distinct change in performance— this indicates a need for service.

Replacement Parts: When replacement parts are required, be sure the service technician uses replacement parts specified by the manufacturer or which have the same characteristics as the original parts. Unauthorized substitutions may result in fire, electric shock, or other hazards.

Heat: The unit should be situated away from heat sources such as radiators, heat registers, stoves, or other units (including amplifiers) that produce heat.



This product complies with the Radio Equipment Directive (2014/53/EU) when used and installed according to the instruction manual.

The *Bluetooth*® word mark and logos are registered trademarks owned by Bluetooth SIG, Inc. and any use of such marks by Armour Home Electronics Limited is under licence. Qualcomm® aptX™ is a product of Qualcomm Technologies International, Ltd. Qualcomm® and aptX™ are registered trademarks of Qualcomm Incorporated, registered in the United States and other countries, used with permission. Systemline and Q Acoustics are registered trademarks of Armour Home Electronics Limited. All other product names are trademarks or registered trademarks of their respective owners.

2.0 First switching ON - Important information – tuning the DAB radio

When the E100 is first switched on after installation, it will automatically perform a scan to detect all available DAB radio stations. This may take a few minutes to complete.. Once the scan is complete, the E100 will return to normal operation

Note1: If power to the E100 is interrupted during the DAB scan process, the scan will need to be repeated when the power is restored. See MENU functions on how to initiate a DAB scan

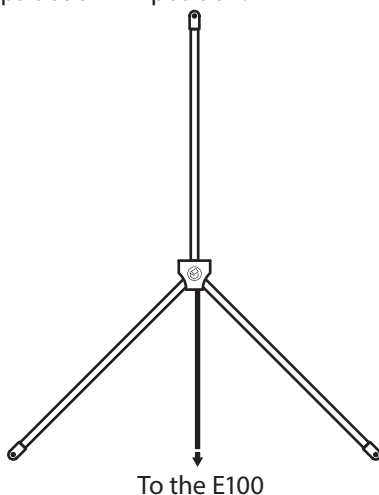
Note2: The exact number of DAB stations available will vary from area to area.

If you experience poor reception, it may be that you are in a weak signal area and require an external DAB antenna (recommended), or a higher gain amplified antenna.

If you do change or move the antenna after installation or first connection of antenna a factory reset will be required to ensure a full DAB scan is performed. see section 11.8.

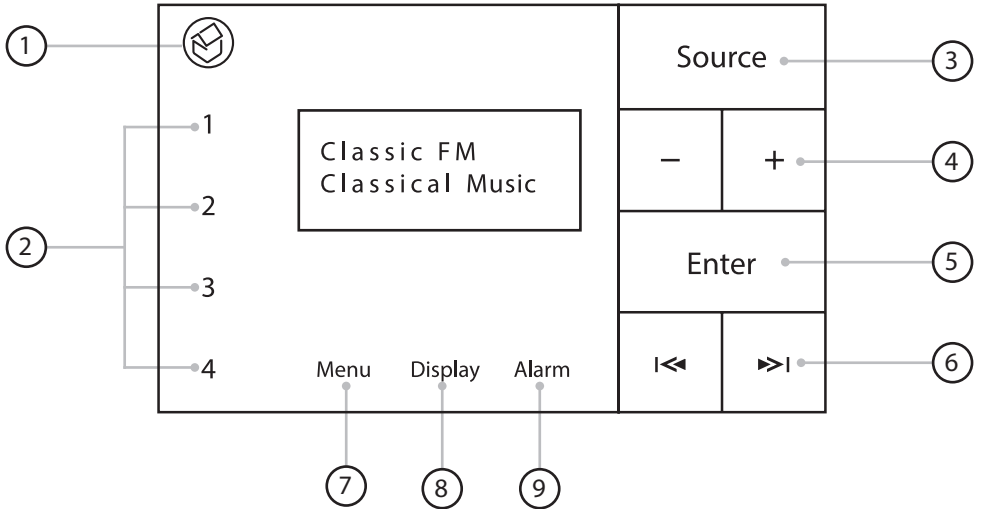
2.1 Installation of included DAB antenna

The supplied DAB aerial should be installed in the highest possible location and mounted vertically in an upsidedown Y position.



Note: The aerial cable can be installed beforehand or extended using an CT100 or QED QX100 cable

3.0 Front panel controls



1. Standby

Illuminates red to indicate the unit has entered standby.

2. Pre-set 1-4

Touch here to choose or set pre-sets

3. Source selection

Touch here to switch between DAB/FM/*Bluetooth*/Line input

4. Volume keys

Touch here to increase or decrease the volume.

5. Enter key

DAB - Select radio station

Bluetooth - Play / Pause

Menu - Enter

6. Forward and back keys

DAB - Station + / -

FM - Tune frequency

Bluetooth - Skip track

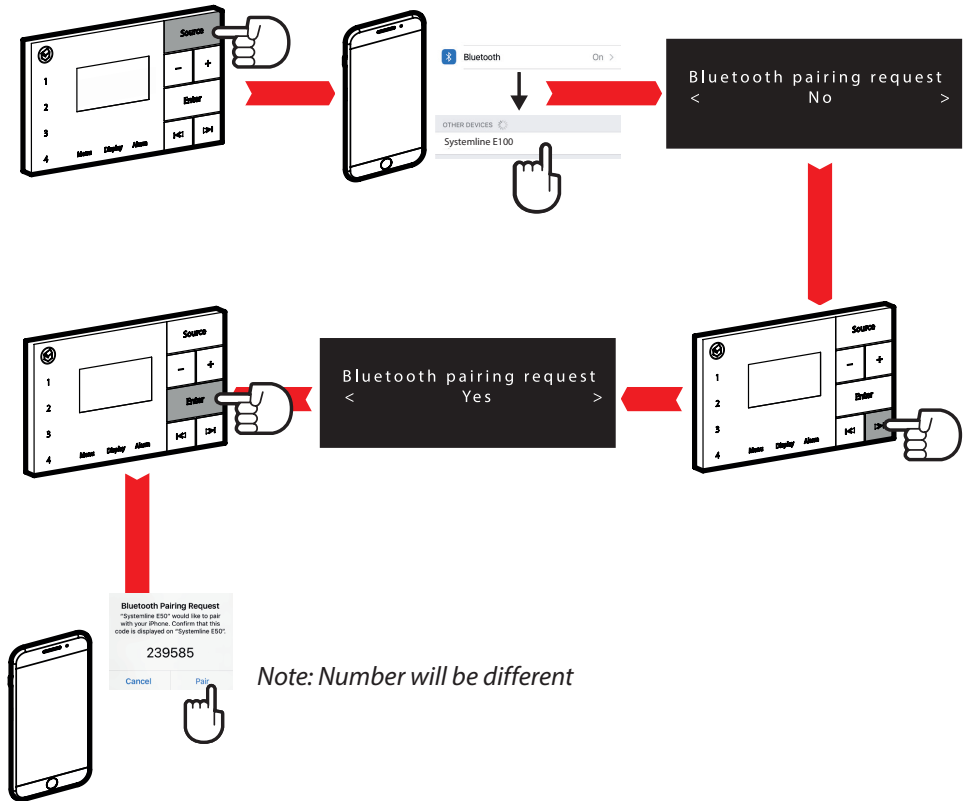
Menu - Next / Prev item

7. Menu

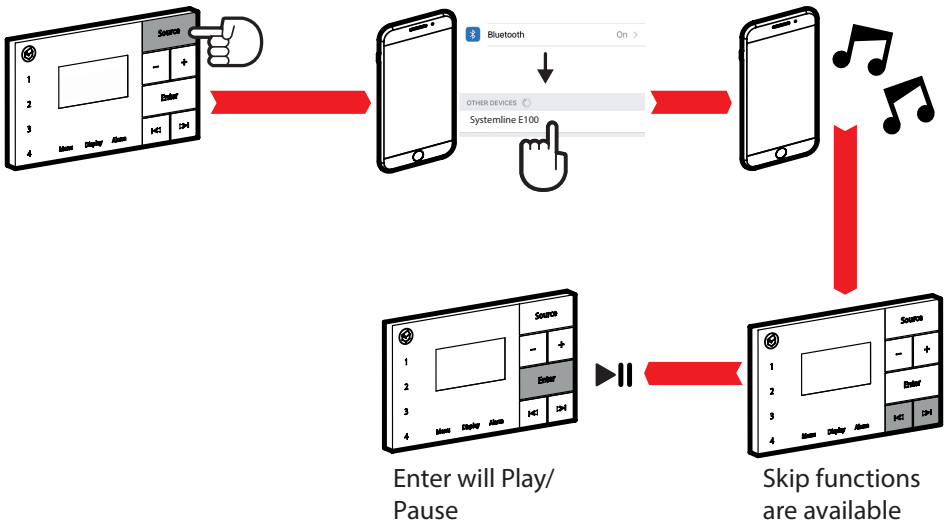
8. Change display information

9. Set alarms and on/off

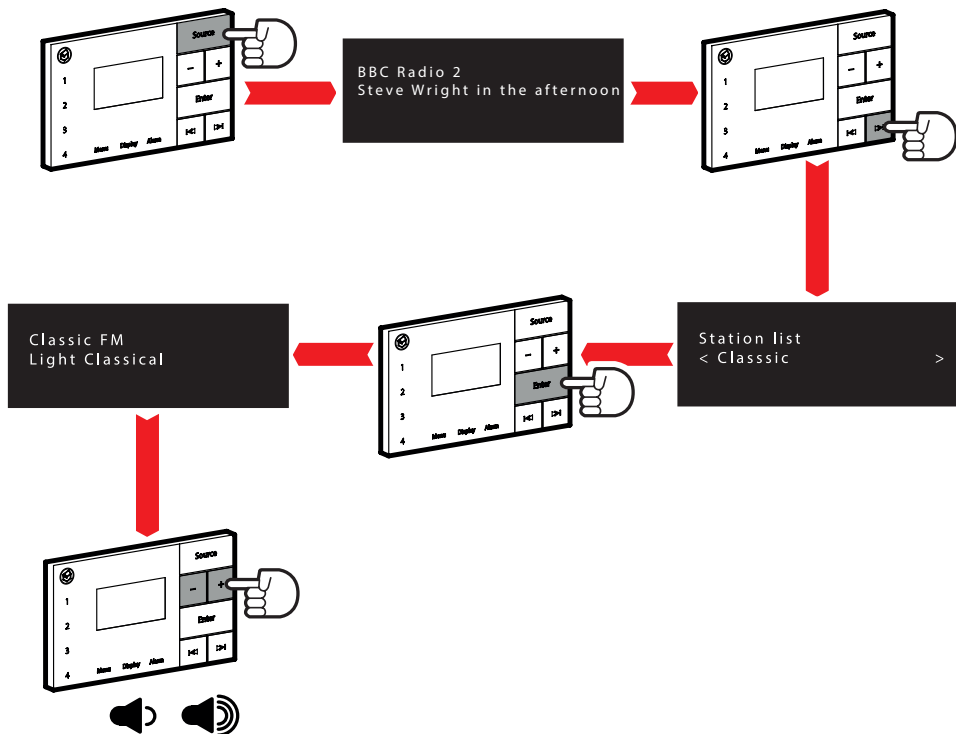
4.0 Pairing a *Bluetooth* device



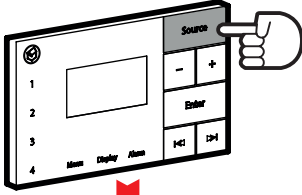
5.0 Listening to a connected *Bluetooth* music source



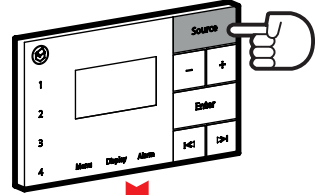
6.0 Listening to DAB Radio



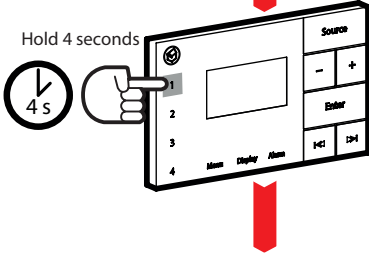
7.0 Storing pre-sets



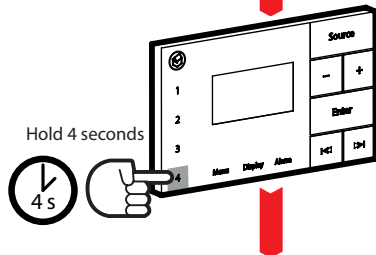
BBC Radio 2
Steve Wright in the afternoon



AUX IN



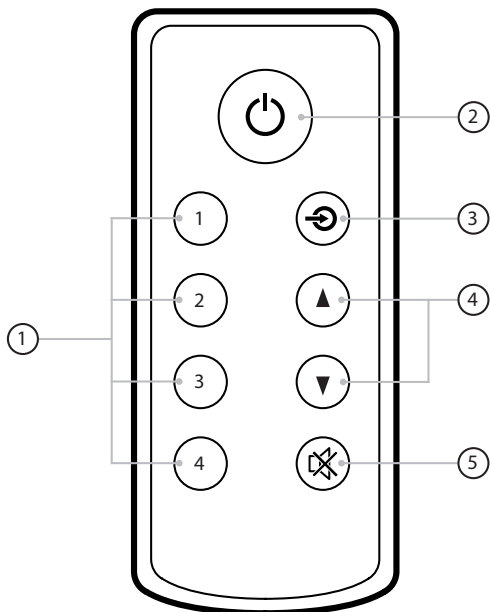
BBC Radio 2
Preset 1 saved



AUX IN
Preset 4 saved

8.0 Infrared handset control

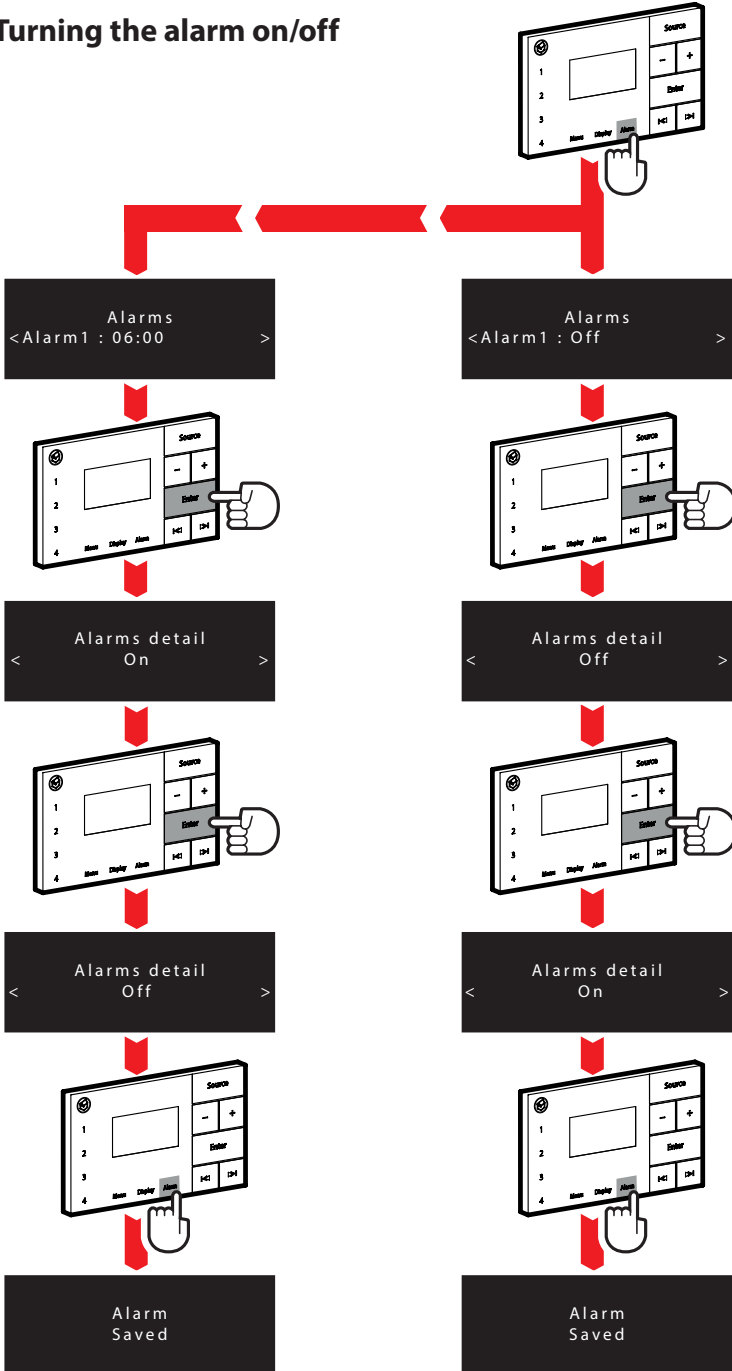
In addition to the front panel controls, the E100 can also be controlled via the included infrared handset.



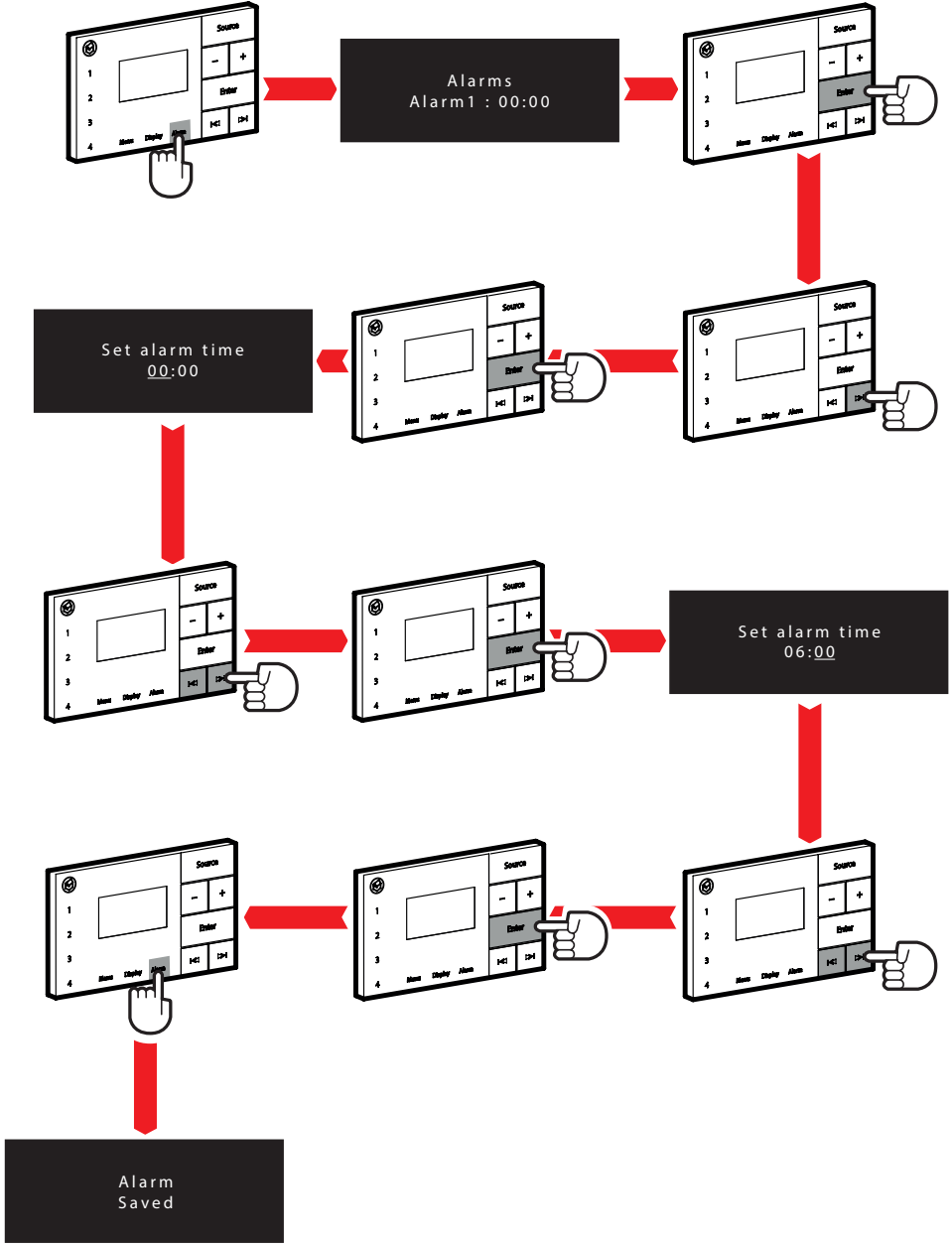
1. Pre-sets 1-4
2. Power (standby/on)
3. SOURCE
4. Volume controls
5. Mute

9.0 Using the ALARM function for alarm 1

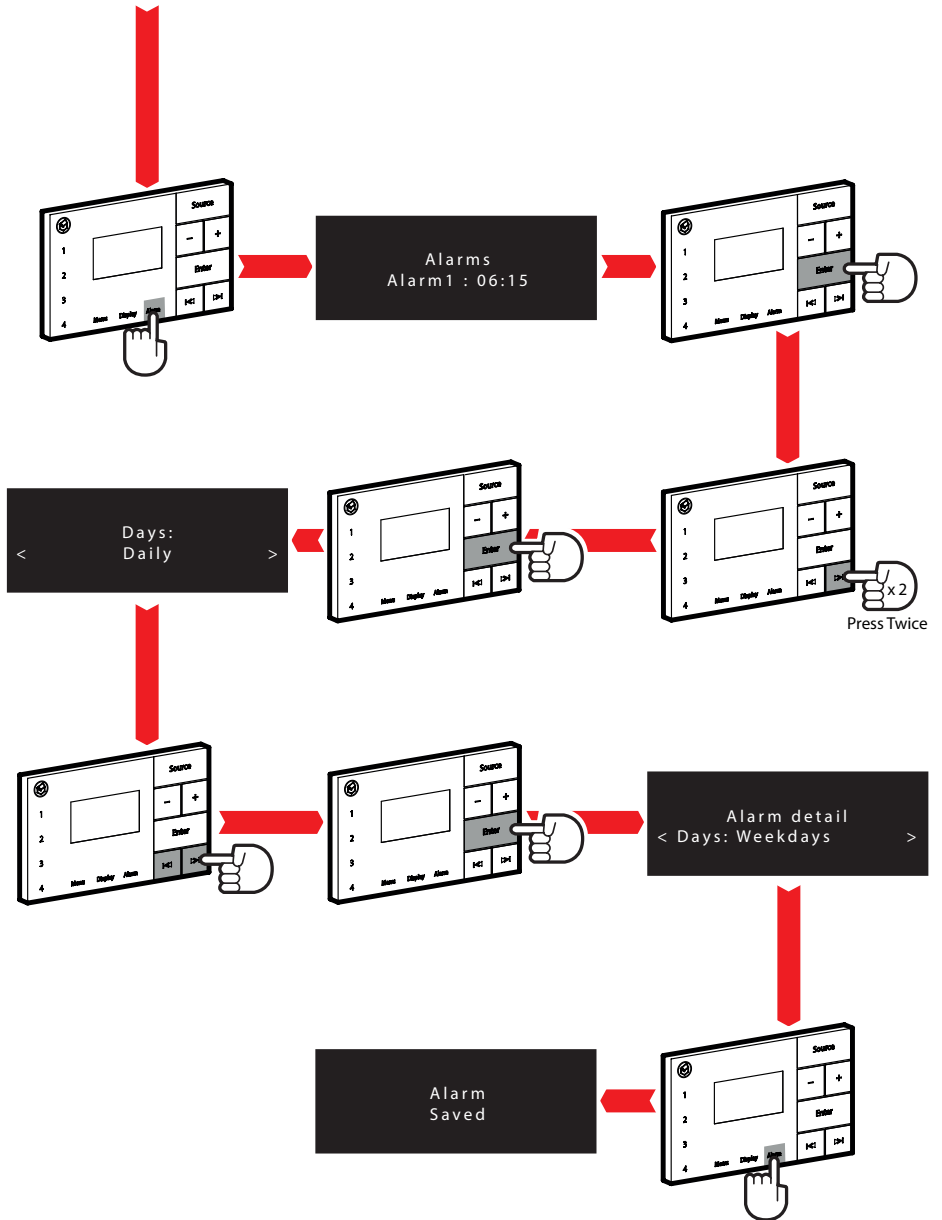
9.1 Turning the alarm on/off



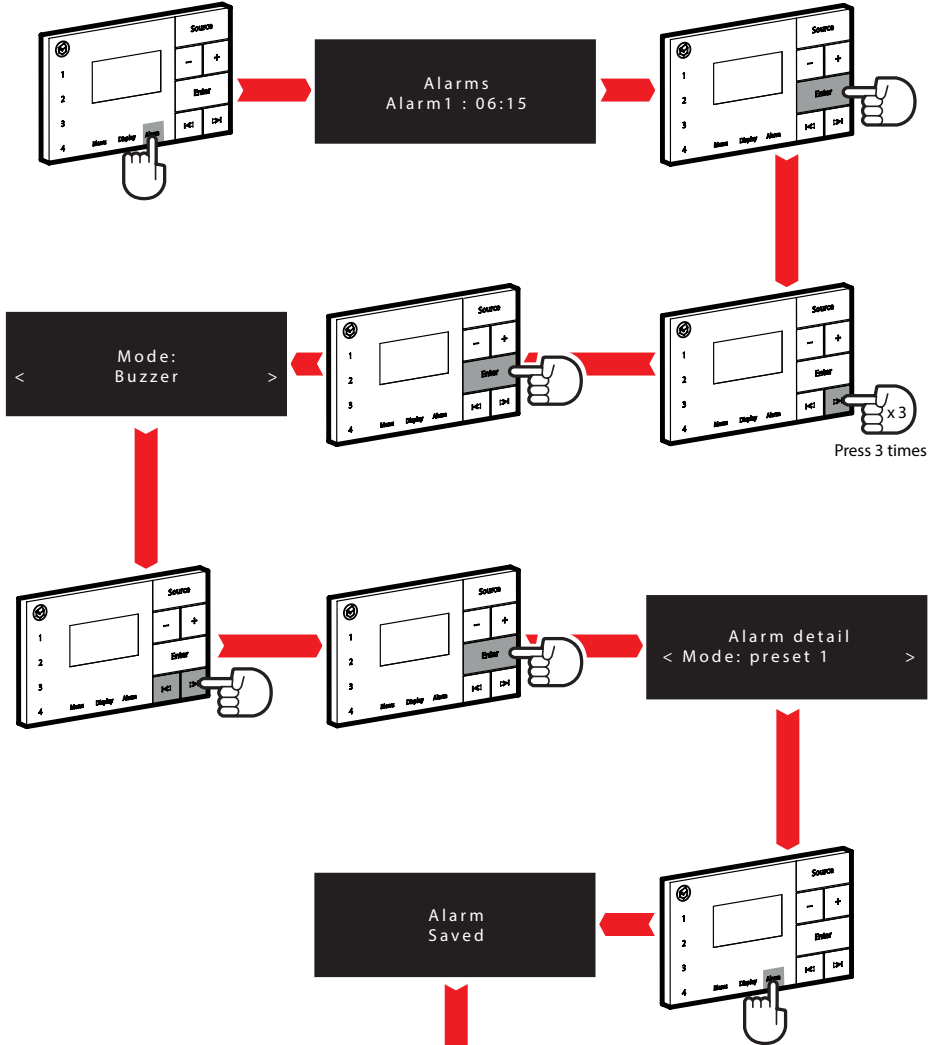
9.2 Setting the alarm time and day



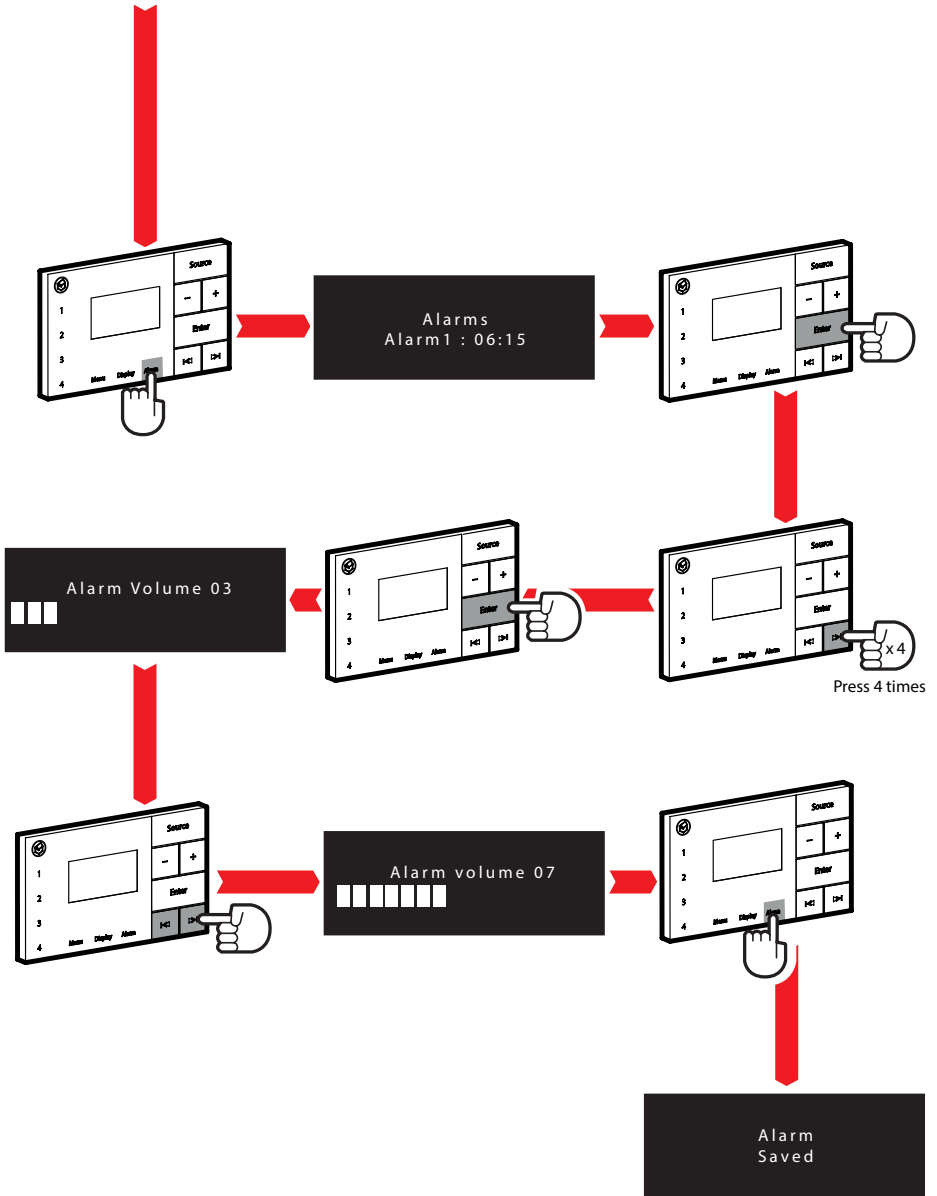
Note: Continues on next page



9. Setting the alarm mode and volume



Note: Continues on next page



10.0 Using the ALARM function for alarm 2

You can set a second alarm for different days and time, simply select Alarm2 at the beginning of the alarm setup and then follow the instructions outline above.

11.0 Using the MENU function

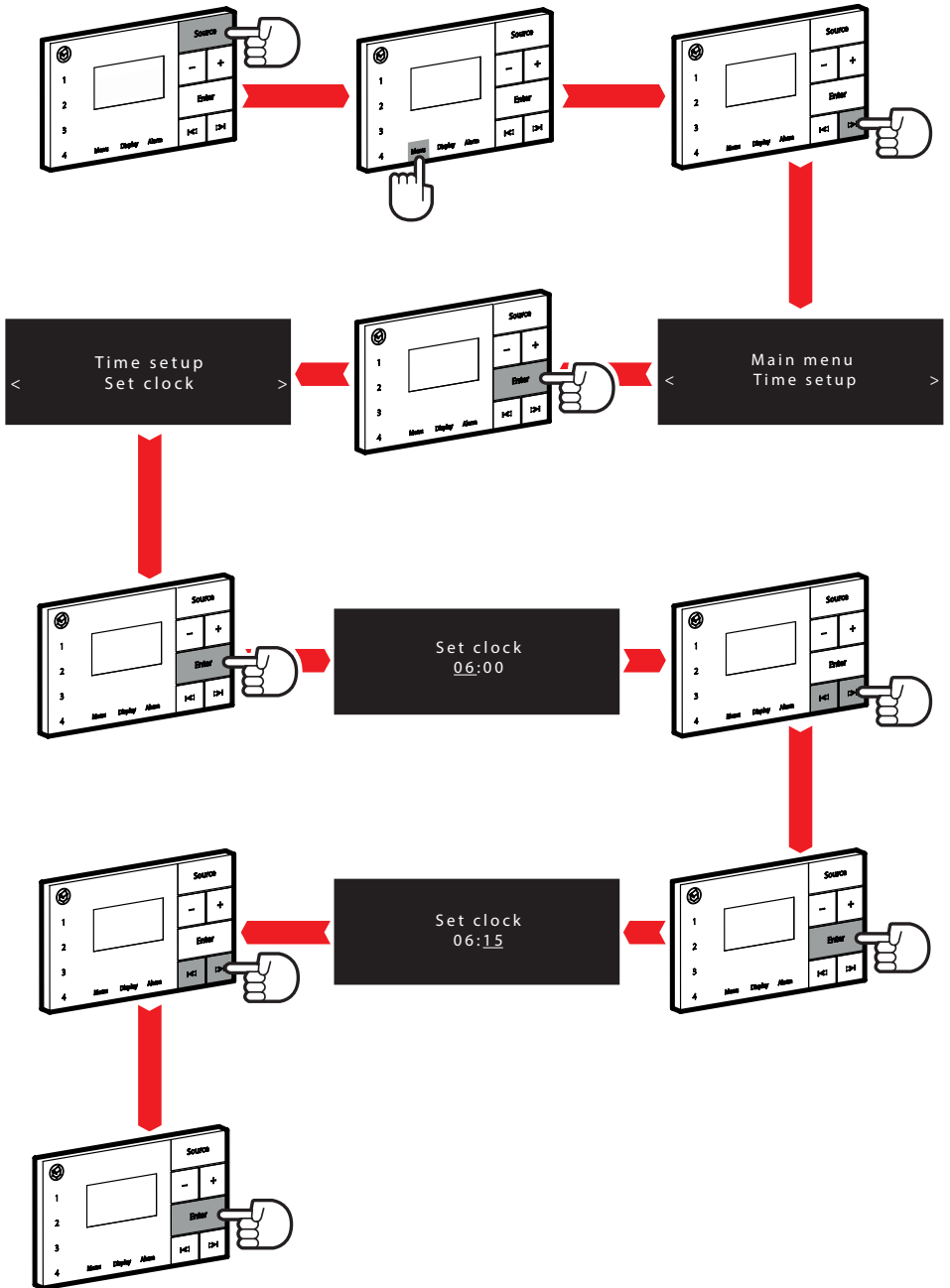
The MENU function is mainly used for set-up purposes and provides access to the following settings.

- Station scan (only shown when on DAB source)

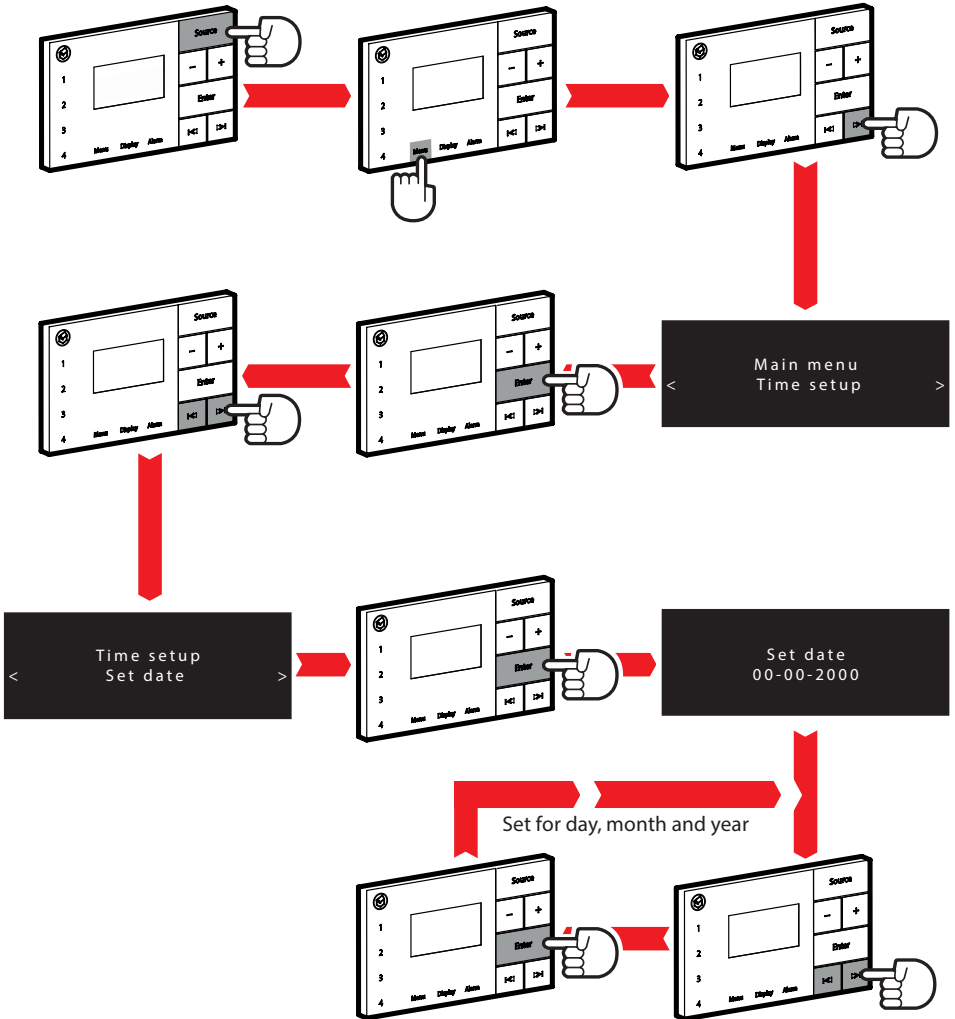
- FM setting (only shown when on FM source)
 - Audio setting
 - Regions

- Main Menu
 - Time set up
 - EQ setting
 - Bluetooth** name
 - Sleep
 - Language
 - Factory reset
 - SW version

11.1 Time set up

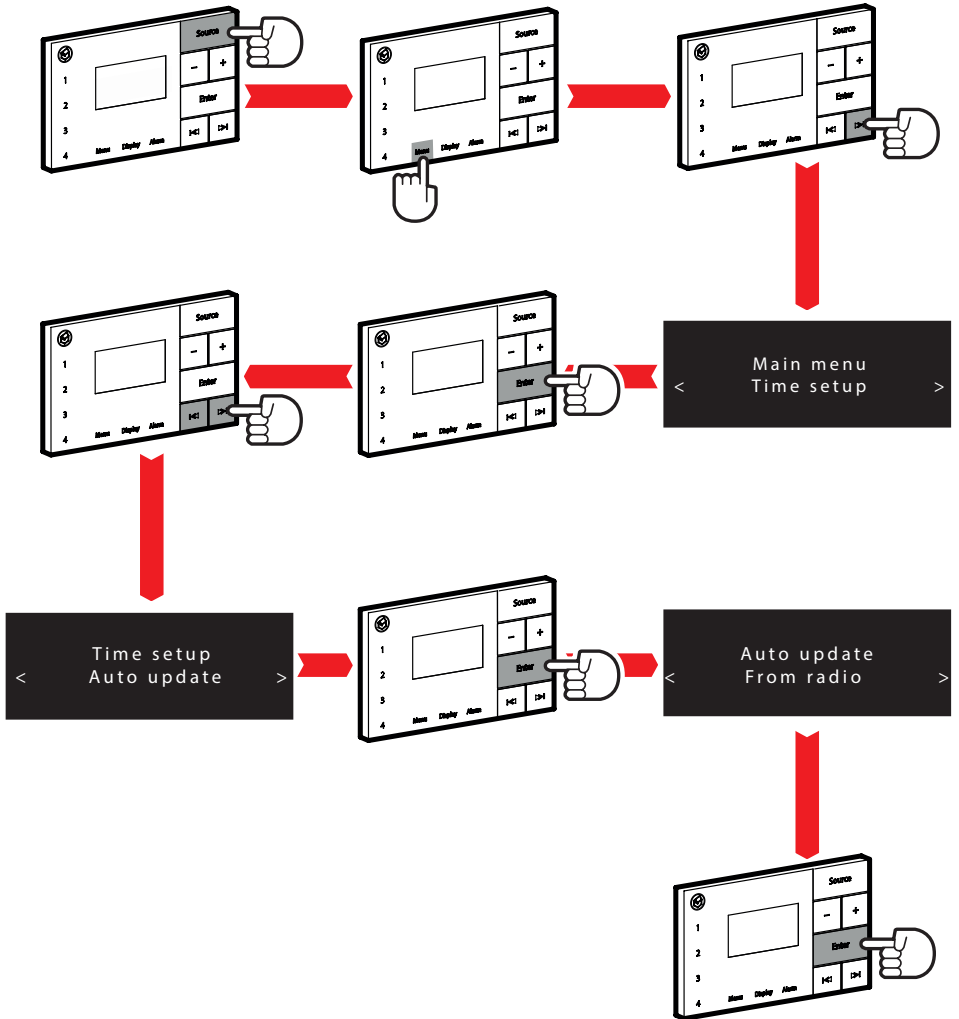


11.2 Date setup

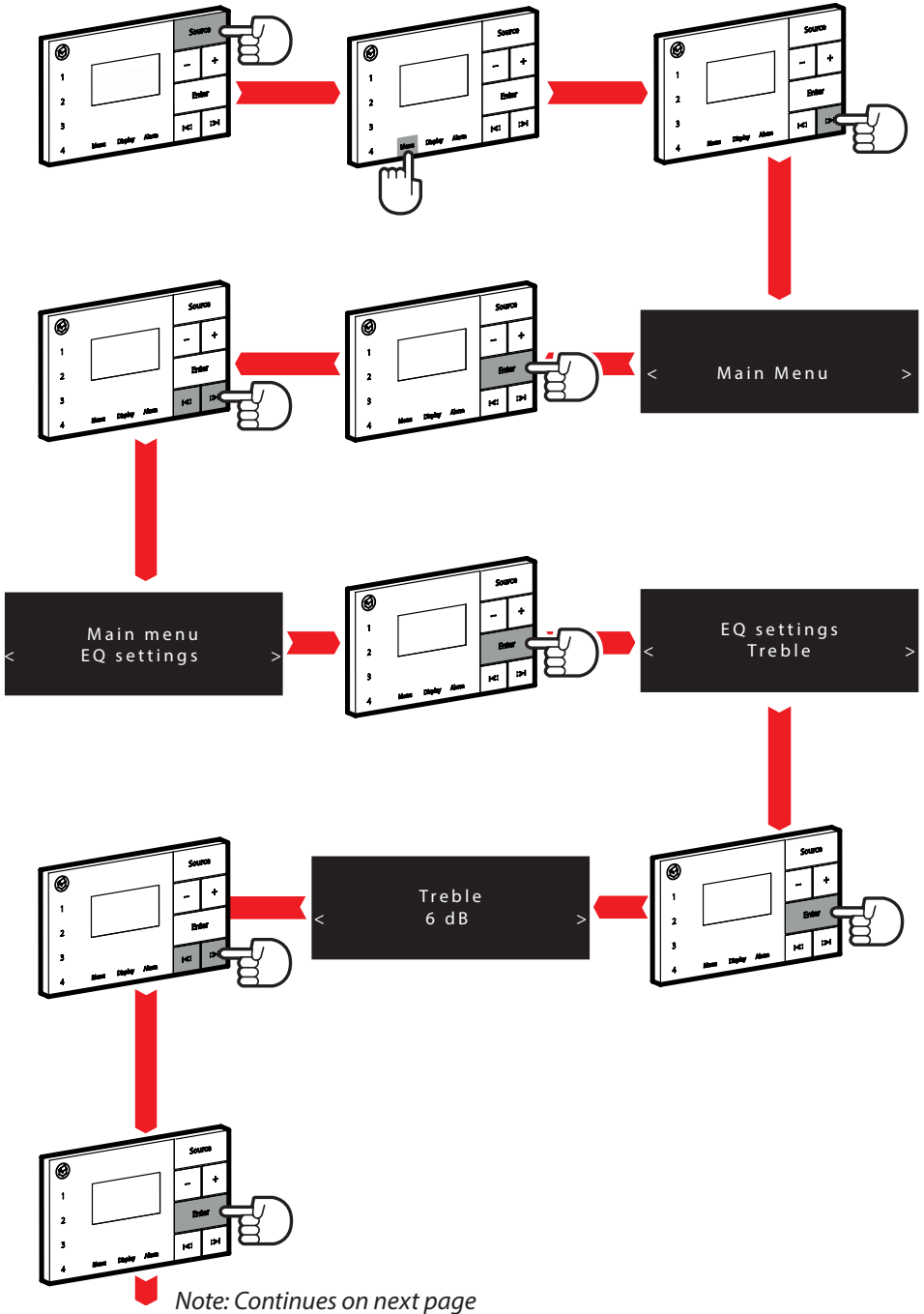


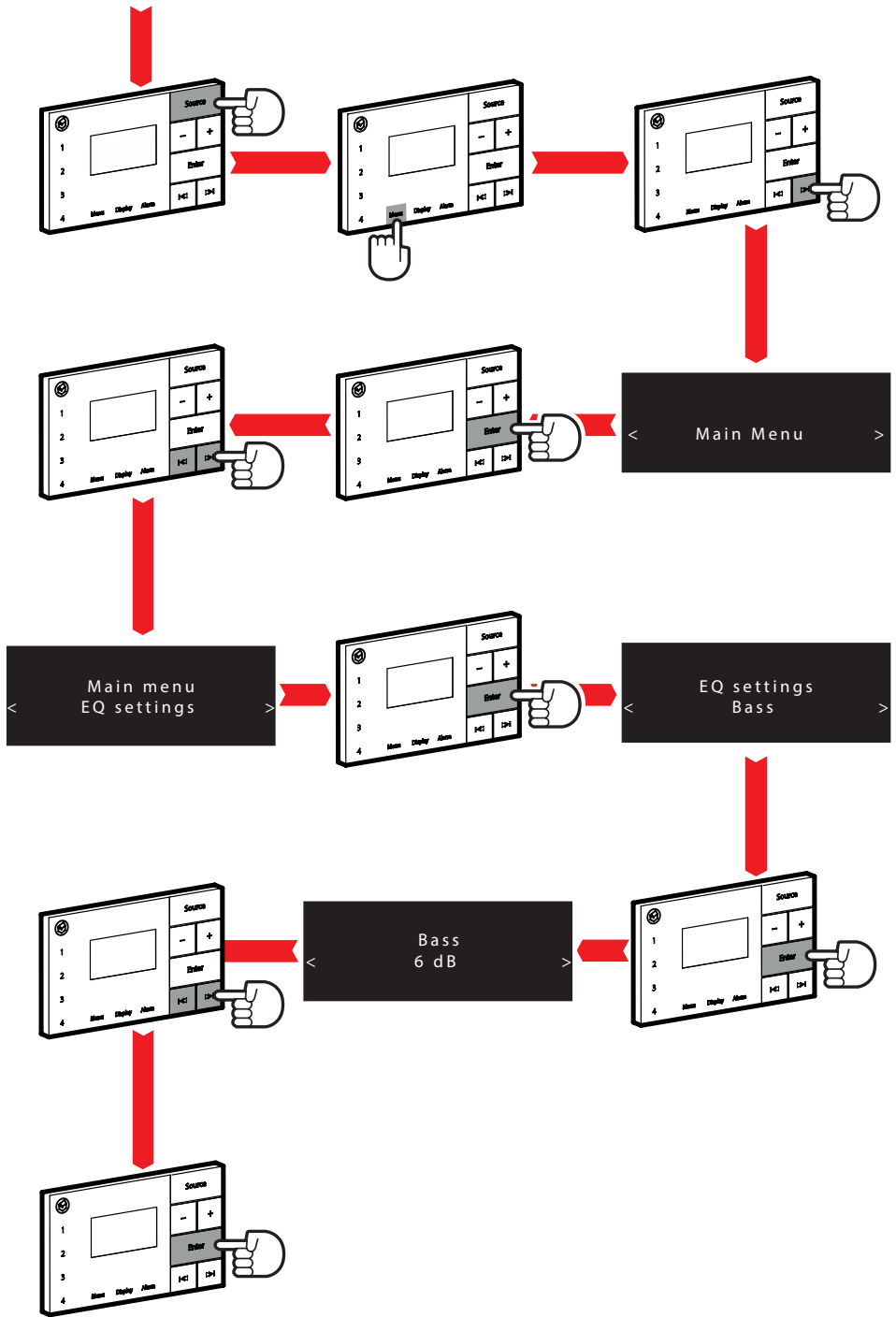
11.3 Setting the date and time using auto updates from radio

Note: This is the recommended setting to use.

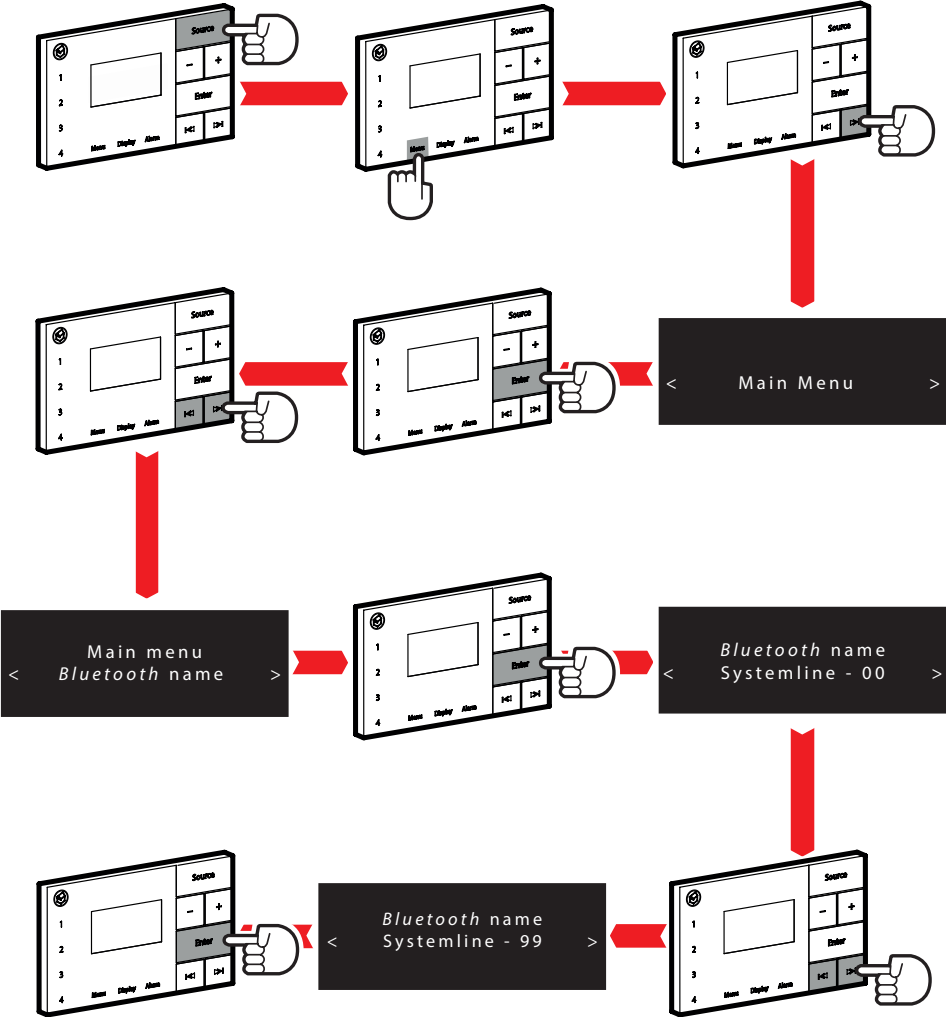


11.4 Setting the EQ

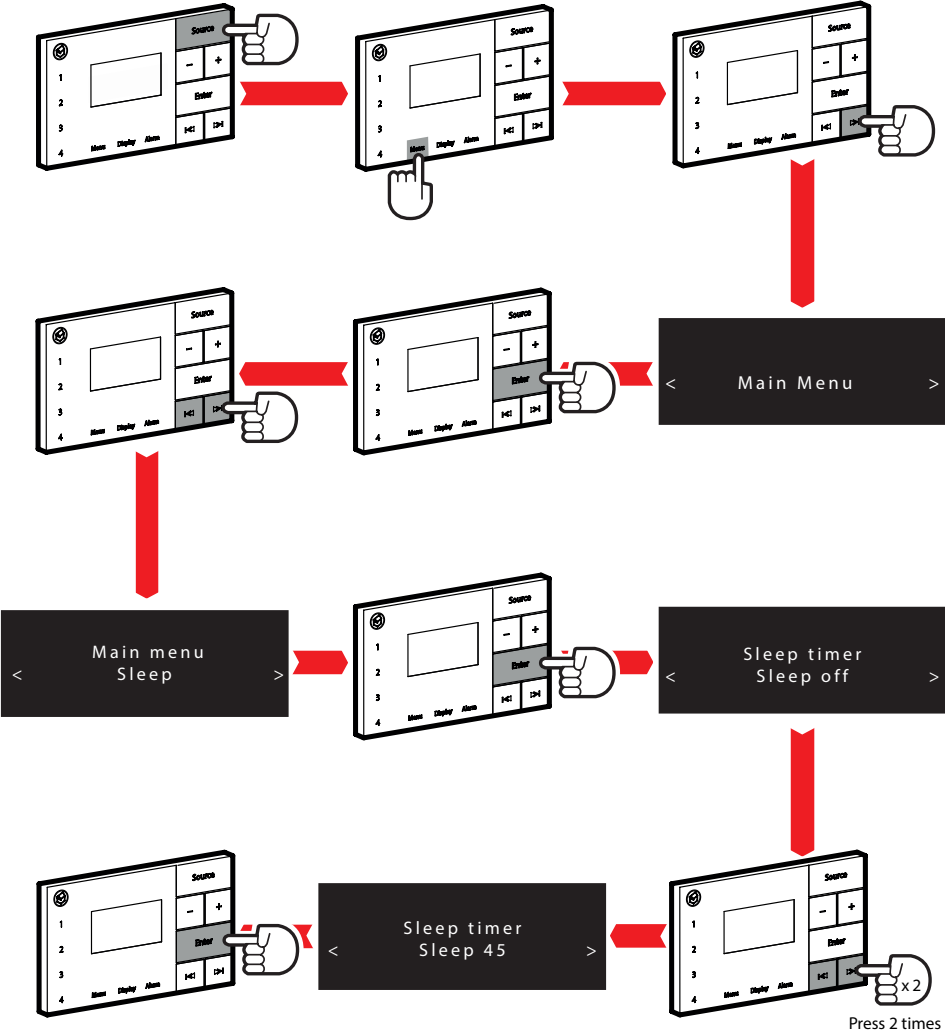




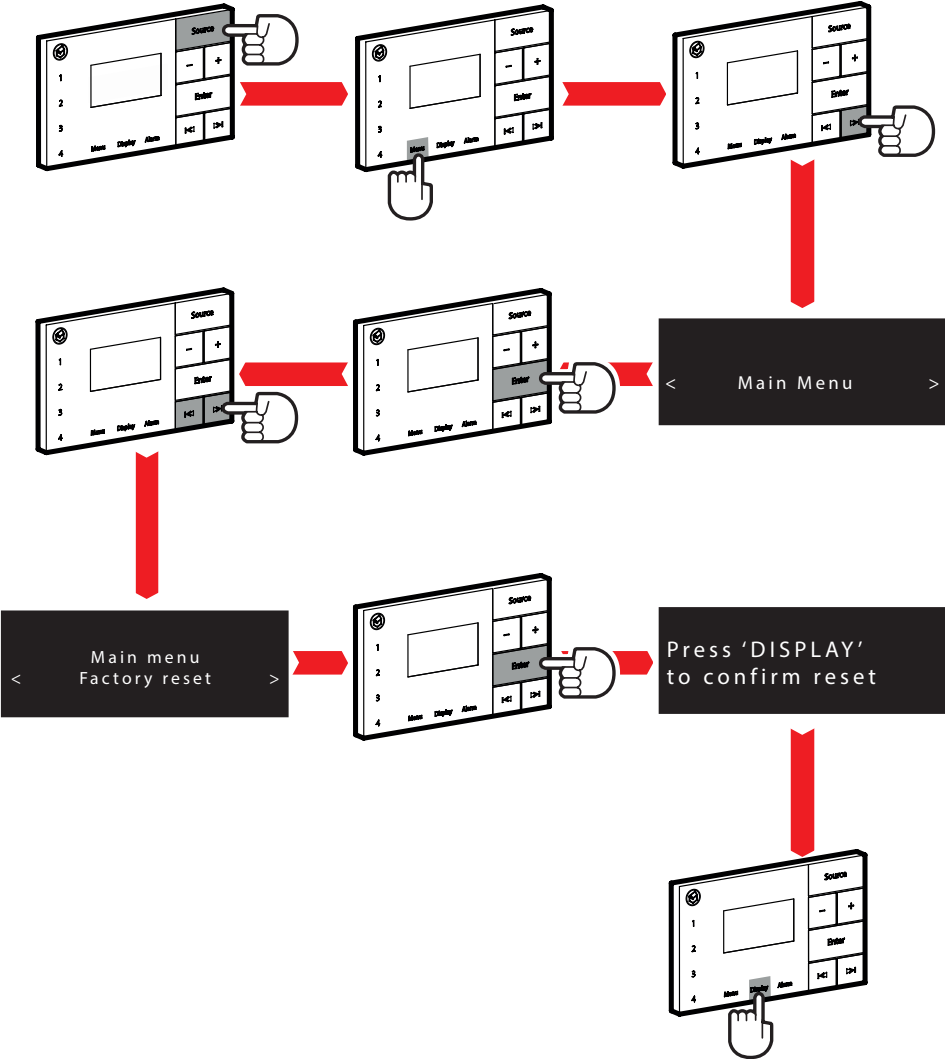
11.5 Bluetooth Name



11.6 Sleep timer

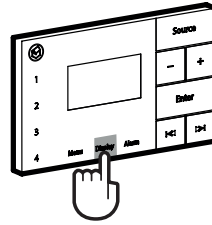


11.8 Factory reset



12.0 Changing the display

12.1 Display



BBC Radio 2
Steve Wright in the afternoon

Radio
Program



BBC Radio 2
Pop Music

Music
Genre



BBC Radio 2
02:16pm 15-02-18

Time and
Date



BBC Radio 2
12B 225.648MHz

Frequency



BBC Radio 2
128kbps / DAB

Audio Stream
Quality



BBC Radio 2
■■■

Signal
Strength

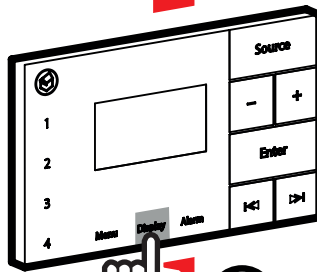


BBC Radio 2
Signal error 15

Signal
Error

12.2 Display brightness

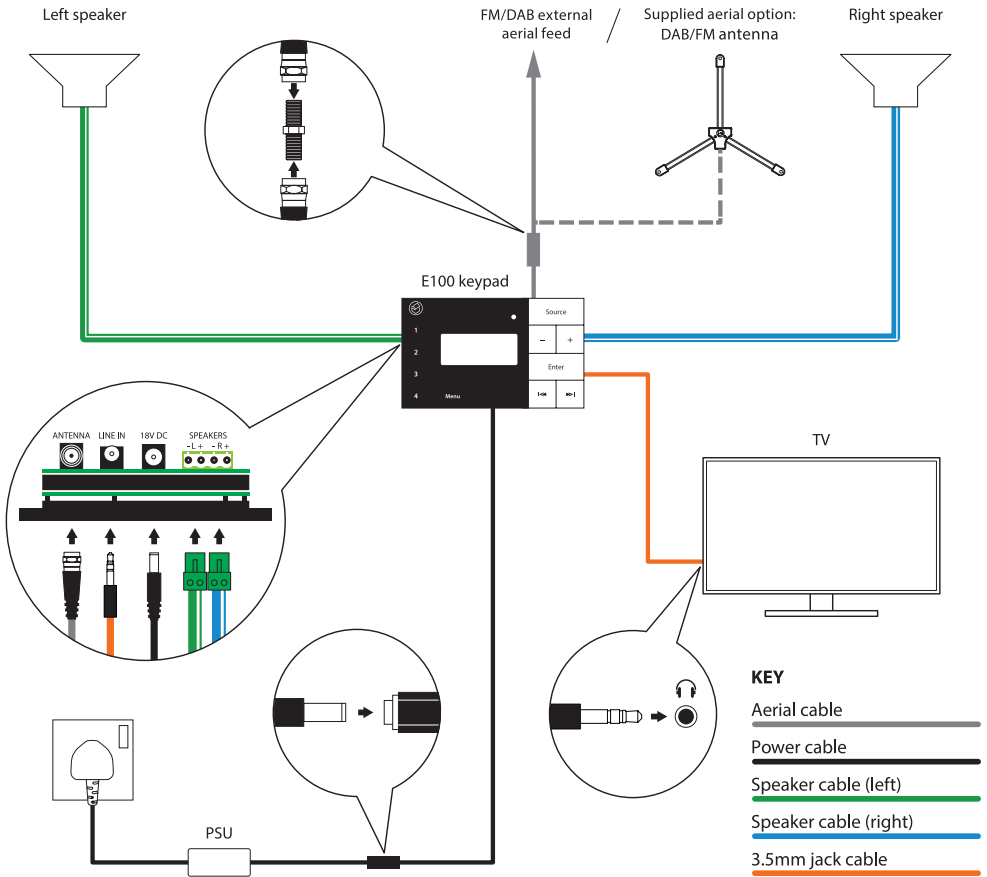
BBC Radio 2
Steve Wright in the afternoon



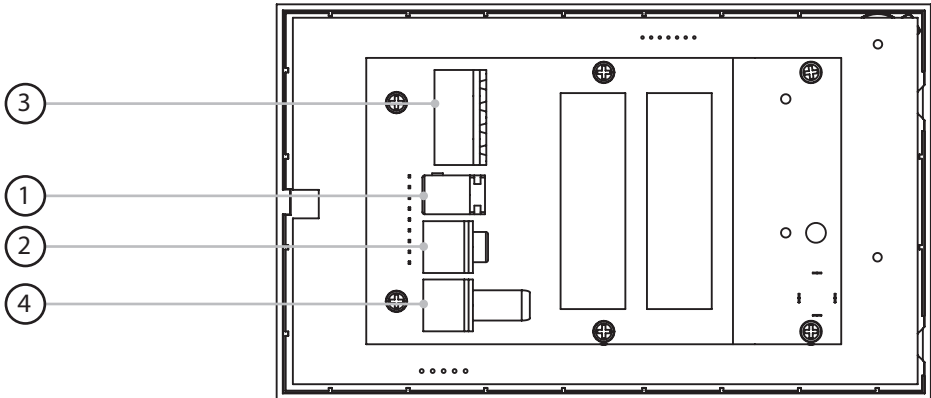
Hold 3 seconds

BBC Radio 2
Steve Wright in the afternoon

13.0 Wiring diagram



14.0 Rear panel connections



1. Power input

Use ONLY the power supply provided with the unit. Failure to do so may cause irreparable damage to the E100.

2. Analogue auxiliary input

An analogue input can be connected using a suitable stereo audio cable available separately.

3. Speaker outputs

Use the green terminal blocks provided to attach the speakers – take care to ensure that the polarity is correct.

4. DAB/FM Aerial connection

Use the supplied cable.

Note: Please refer to the supplied 1st & 2nd fix instruction documents for further information.

Technical Specification

Radio	1DAB/DAB+ and FM with RDS. 4 preset station.
<i>Bluetooth</i>	Class 2 <i>Bluetooth</i> 2.1. Apt-x for CD-quality transmission. Secure pairing Passcode. Selectable device name to allow multiple units to be used in close proximity. Range up to 10m.
Aux input	725mV Normal Gain or 250mV Boost Gain.
Alarms	2 separate alarms configurable for daily, weekday or weekend operation.
Languages supported	English, Chinese, Danish, French, German, Italian, Norwegian, Spanish and Swedish.
power output	2 x 18W into 8 Ohms @ 0.5% THD 1kHz
Frequency response	20Hz - 20kHz +/- 1dB
Power supply	110-240 VAC



Stortford Hall Industrial Park
Dunmow Road
Bishops Stortford
Hertfordshire
CM23 5GZ
United Kingdom

www.systemline.co.uk



©2018 Armour Home Electronics, all rights reserved.
Our policy is one of continuous improvement and we reserve the right to
change the designs and specifications without notice.
All information is given in good faith. The manufacturer accepts no
responsibility for errors, omissions or incorrect assumptions.

Designed and engineered in the United Kingdom. Made in China (P.R.C.)

Q16821-IS_r10